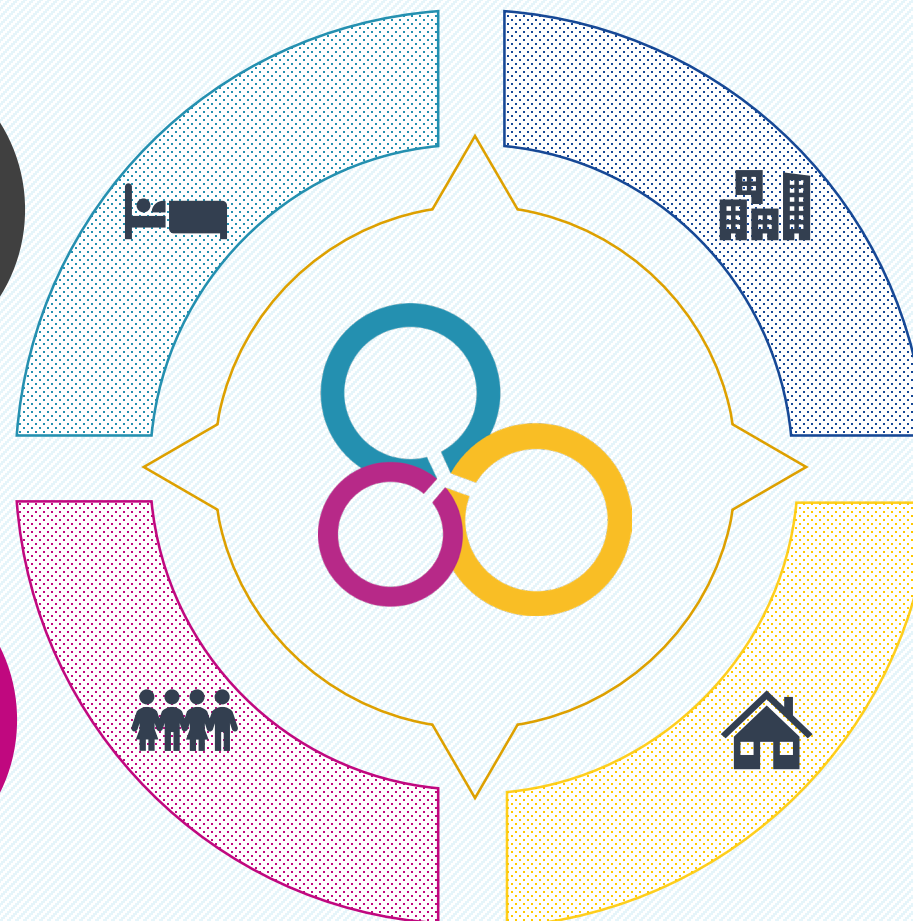


# List of accommodation in Epinal

Short and long-term stay – 2026-2027



PARTNERSHIP  
& STUDAPART



STUDENT  
RESIDENCES

FLAT SHARE  
« COLIVING »

INDIVIDUAL  
HOUSING

# List of accommodation in Epinal

Short and long-term stay – 2026-2027



## PARTNERSHIP & STUDAPART



With [Studapart](#), the Université de Lorraine provides students, PhD students and researchers with a platform offering accommodation from private landlords, real estate agencies and student residences close to the campuses.

- With Studapart, you can benefit from:
- ✓ a **personalized support** throughout your search: from the rental application to booking your accommodation;
  - ✓ **optional services** after your reservation: house insurance, Studapart guarantor. Minimum stay: 1 month. **Reservation fees apply.**

Register with your ENT (UL) login at:  
<https://univ-lorraine.studapart.com/en/>.





## STUDENT RESIDENCES



\*Glossary and abbreviations [here](#)



	Address & Contact	Types of accommodation	Nearest campus
<a href="#">Résidence VOIVRE 1</a>	19 rue Cendrillon, 88000 EPINAL Tel. N°: +33(0)3 29 64 14 40 <a href="#">Contact form</a>	81 furnished rooms of 11m <sup>2</sup> , 23m <sup>2</sup> or in apartments, with shared <b>kitchen</b> and <b>bathroom</b> . Wifi included. Fitness area.	Campus Bois
<a href="#">Résidence VOIVRE 2</a>	37 rue Cendrillon, 88000 EPINAL Tel. N°: +33(0)3 29 64 14 40 <a href="#">Contact form</a>	52 furnished 11m <sup>2</sup> rooms, with shared <b>kitchen</b> and <b>bathroom</b> , and fridge in each room. Wifi included. Fitness area.	Campus Bois
<a href="#">Résidence CLAIR MATIN</a>	Rue du Clair Matin, 88000 EPINAL Tel. N°: +33(0)3 29 64 14 40 <a href="#">Contact form</a>	41 furnished 13m <sup>2</sup> rooms, with shared <b>kitchen</b> and <b>bathroom</b> , and fridge in each room. Wifi included. Fitness area.	Campus Perrault
<a href="#">Résidence COLOMBIER</a>	104 faubourg d'Ambrail, 88000 EPINAL Tel. N°: +33(0)3 29 64 14 40 <a href="#">Contact form</a>	32 furnished rooms of 11m <sup>2</sup> , 13m <sup>2</sup> and 15m <sup>2</sup> , with private <b>bathroom</b> and shared <b>kitchen</b> . Wifi included. Relaxation room.	Campus Maix - CEJE
<a href="#">Coloc LES JONQUILLES</a>	Allée des Jonquilles, 88000 EPINAL Tel. N°: +33(0)3 29 64 14 40 <a href="#">Contact form</a>	Furnished and equipped <b>T4*</b> and <b>T3*</b> coliving apartments between 65m <sup>2</sup> and 76m <sup>2</sup> , with shared <b>bathroom</b> and <b>kitchen</b> . Additional services available. Wifi included. Fitness area.	Campus Bois

Please contact the residences directly by email in order to book an accommodation.

If necessary, contact us by email at:



## FLAT SHARE "COLIVING"



\*Glossary and abbreviations [here](#)

Official website/Address

Types of accommodation

[La Carte des Colocs](#)

<https://www.lacartedescolocs.fr/>

Flatshare

[Cohébergement](#)

<https://www.cohebergement.com/>

Bed & Breakfast

[Lokaviz](#)

<https://www.lokaviz.fr/>

Accessible only to students and PhD students  
Platform managed by CROUS  
Student accommodation in a private home

[Roomlala](#)

<https://fr-fr.roomlala.com/>

Bed & Breakfast  
Flatshare



[Coloc LES JONQUILLES](#)

For students, managed by the Maison de l'Etudiant d'Epinal. For further information, click [here](#).



**Beware of scams:**  
be careful and only get in touch with private owners and book on the official websites.

In case you have any doubts, please contact us at:

# List of accommodation in Epinal

Short and long-term stay – 2026-2027



## INDIVIDUAL HOUSING REAL ESTATE AGENCIES



\*Glossary and abbreviations [here](#)



SUGGESTION OF REFERENCED  
WEBSITES



[L'Adresse](#)

[Citya](#)

[Foncia](#)

[IMAJ Immo](#)

[Immobilière  
Lormont](#)

[La Forêt](#)

Agency fees will be charged for all rental contracts signed through a real estate agency in France.

For more information about agency fees, please visit the [Service Public website](#).



## INDIVIDUAL HOUSING PRIVATE RENTALS



\*Glossary and abbreviations [here](#)



SUGGESTION OF REFERENCED  
WEBSITES

[Le Bon Coin](#)

[Locservice](#)

[PAP  
Particulier à Particulier](#)

[Paru Vendu](#)

[Seloger.com](#)

Official website

Types of accommodation

Additional information

<https://www.leboncoin.fr/>

Individual or shared apartments, furnished or unfurnished. Rent excluding charges (\*HC) or including charges (\*CC).

Ads from professional or private owners. Create a free account to get the contact details.

<https://www.locservice.fr/locataires/>

Individual or shared apartments, furnished or unfurnished. From the rental request, direct contact with owners. No agency fees.

Registration fees: 34€ for 1 year (29€ for students) to create your rental request.

<https://www.pap.fr/>

Individual apartments, furnished or unfurnished. Rents including charges (\*CC).

Direct contact with private owners. Create an account for free to follow your email alerts, messages or favorite ads.

<https://www.paruvendu.fr/immobilier/>

Individual apartments, furnished or unfurnished. Rent excluding charges (\*HC) or including charges (\*CC).

Direct contact with private owners or professionals. Create an account for free.

<https://www.seloger.com/>

Individual apartments, furnished or unfurnished. Rent excluding charges (\*HC) or including charges (\*CC).

Direct contact with private owners or professionals. Create an account for free to update your profile.

**Beware of scams:**  
be careful and only get in touch with private owners and book on the official websites.

We advise you to visit the apartment before booking it.

In case you have any doubts, please contact us at:

# List of accommodation in Epinal

Short and long-term stay – 2026-2027



## INDIVIDUAL HOUSING SOCIAL HOUSING/H.L.M.

Priority to families



\*Glossary and abbreviations [here](#) 



[Epinal Habitat](#)

Office public de l'Habitat de l'Agglomération d'Epinal  
23 rue Antoine Hurault, 88000 Epinal  
Tel. N°: +33(0)3 29 29 22 29 - [www.epinal-habitat.com](http://www.epinal-habitat.com)

[Vogelis](#)

Agence d'Epinal  
2 quai André Barbier, 88000 Epinal  
Tel. N°: +33(0)3 29 82 68 50 - [www.vogelis.fr](http://www.vogelis.fr)



To apply for social housing (HLM), please submit your application **online** or at the office.

For more information about HLM, please visit the [Service Public website](#).



## GLOSSARY & ABBREVIATIONS

### GLOSSARY & ABBREVIATIONS

CC = rent including maintenance charges (check which charges are included)

HC = rent excluding maintenance charges (individual and collective charges to be added)

Kitchenette = fully equipped kitchen area

PRM = People with reduced mobility

Sdb = bathroom

T2 = 2-room apartment (1 bedroom + living room, bathroom, kitchen)

T3 = 3-room apartment (2 bedrooms + living room, bathroom, kitchen)



Are you experiencing difficulties in your housing search ?

Please contact your [Euraxess Center](#).



Download your  
Accommodation guide and  
the Perfect Tenant guide  
on [Euraxess France website](#)

In order to help  
you in your search,  
feel free to consult  
the [glossary of  
housing  
abbreviations](#).

