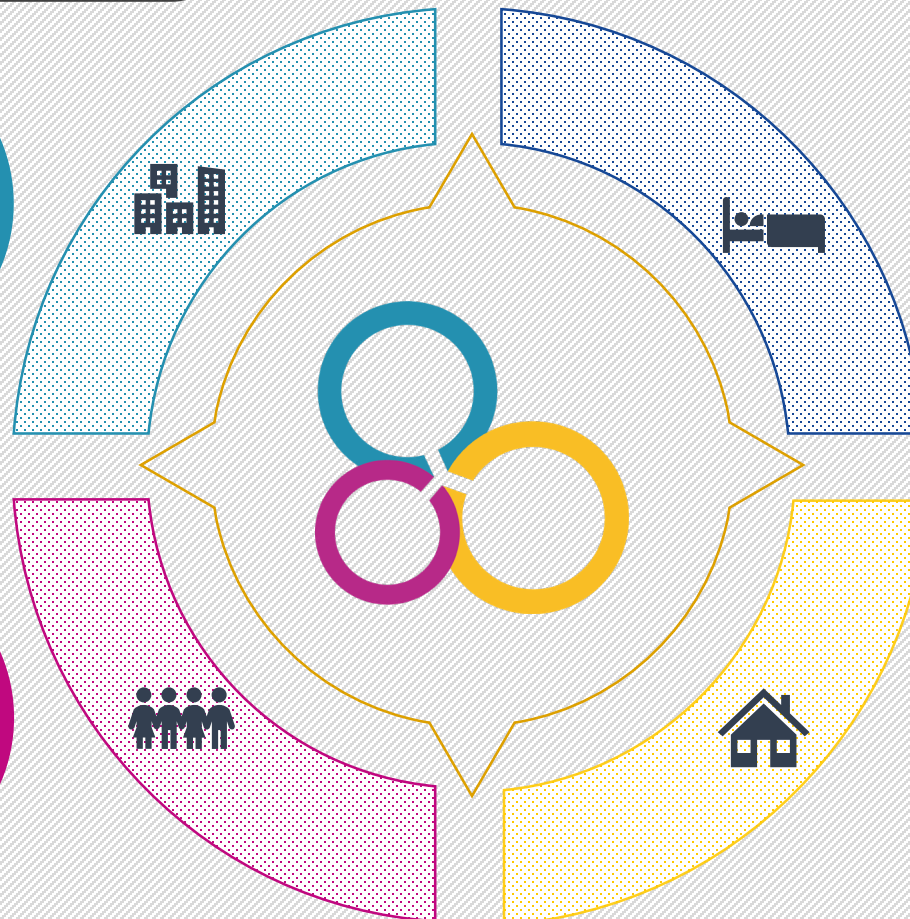


List of accomodation in Metz

Long-term stay – 2024-2025

PARTNERSHIP  & STUDAPART

RESIDENCES



LONG STAY
APPART'HOTELS

FLAT SHARE
"COLIVING"

INDIVIDUAL
HOUSING

List of accomodation in Metz

Long-term stay – 2024-2025

 PARTNERSHIP
& STUDAPART



With [Studapart](#), the Université de Lorraine provides students, PhD students and researchers with a platform offering accomodation from private landlords, real estate agencies and student residences close to the campuses.

With Studapart, you can benefit from:

- ✓ a **personalized support** throughout your search: from the rental application to booking your accomodation;
- ✓ **optional services** after your reservation: house insurance, Studapart guarantor. Minimum stay: 1 month. **Reservation fees apply.**

Register with your ENT (UL) login at:
<https://univ-lorraine.studapart.com/en/>.



List of accomodation in Metz

Long-term stay – 2024-2025



RESIDENCES



*Glossary and abbreviations [here](#)



Address & Contact	Types of accomodation	Nearest campus
<p>11 boulevard Sérot, 57000 METZ Contact form : MGEL Logement Metz Tel. N°: +33(0)3 87 66 57 83</p>	<p>Furnished studios and T2 apartments with private kitchenette* and bathroom. Residences available to students and young workers, subject to financial resources and age (under 30).</p>	<p>Multi-site residences: Le Mail (near Saulcy), Amphithéâtre & Europe (near train station)</p>
<p>133 rue du Fort de Queuleu, 57070 Metz Tel. N°: +33(0)3 87 66 83 38 metz@arpej.fr</p>	<p>Furnished studios for 1/2 people, from 18 to 24m² with private kitchenette* and bathroom. Wifi included. Laundry at extra cost. Bike storage. Guarantor required (physical or Visale or Garantme). Only for (PhD) students.</p>	<p>Campus Bridoux Campus Technopôle</p>
<p>6 rue de Verclly, 57050 Metz Tel. N°: +33(0)3 87 65 13 00 queuleu@espace2residences.fr</p>	<p>206 furnished studios and T2 apartments from 19 to 41 m² with private kitchenette* and bathroom. Wifi included. Shared facilities: laundry at extra cost, gym, relaxation room. Guarantor required (physical or Garantme). Application fee: 200€. <u>Minimum stay 1 month.</u></p>	<p>Campus Bridoux Campus Technopôle</p>
<p>120 -122 route de Thionville, 57050 Metz Tel. N°: +33(0)3 87 18 32 00 universite@espace2residences.fr</p>	<p>90 furnished 20 m² studios with private kitchenette* and bathroom. Wifi included. Laundry at extra cost, gym. Guarantor required (physical or Garantme). Application fee: 180€ for students, 230€ for employees. <u>Minimum stay 1 month.</u></p>	<p>Campus Saulcy</p>

[MGEL Logement Metz](#)

[Résidence La Fayette
Technopôle Metz](#)

[Résidence Pythagore
Metz Queuleu](#)

[Résidence Pythagore
Metz Université](#)

Please contact the residences directly by email in order to book an accomodation.

If necessary, contact us by email at:

List of accomodation in Metz

Long-term stay – 2024-2025



LONG STAY APPART'HOTEL



*Glossary and abbreviations [here](#)



Address & Contact

Types of accomodation

Nearest campus

[Appart'hôtel Odalys
Manufacture](#)

1 allée du Front Saint Vincent,
57000 Metz
Tel. N°: +33(0)3 83 15 87 80

Furnished studios and T2 apartments for 4 people with private **kitchenette*** and bathroom. Wifi included. Optional laundry facilities. Fitness room.

Campus Saulcy

[Appart'hôtel Residhome
Metz](#)

10 rue Lafayette, 57000 Metz
Tel. N°: +33 (0)3 87 57 97 06

130 furnished studios and T2 apartments for 4 people with private **kitchenette*** and bathroom. Wifi included. Laundry at extra cost. **PRM*** access.

Near train station: access to campuses by public transport

[Student Factory
Metz - Trèves](#)

1 Boulevard de Trèves 57070 Metz
Tel. N°: +33 (0)1 71 25 08 20

Furnished studios for 1 to 2 people with private **kitchenette*** and bathroom. Wifi included. Optional laundry facilities. Coworking room, relaxation area, kitchen corner open to all.

Campus Saulcy
Access to campuses by public transport

You could benefit from preferential rates if you specify that you are a student or work for the Université de Lorraine.

Contact us by email at:

List of accomodation in Metz

Long-term stay – 2024-2025



FLAT SHARE "COLIVING"



*Glossary and abbreviations [here](#)

Official website

Types of accomodation

[Appartager](#)

<https://www.appartager.com/>

Flat share

[La Carte des Colocs](#)

<https://www.lacartedescolocs.fr/>

Flat share

[Cohébergement](#)

<https://www.cohebergement.com/>

Bed & Breakfast

[Lokaviz](#)

<https://www.lokaviz.fr/>

Accessible only to students and PhD students
Platform managed by CROUS
Student accommodation in a private home

[Roomlala](#)

<https://fr-fr.roomlala.com/>

Bed & Breakfast
Flat share



Beware of scams:
be careful and only
book on official
websites if you
would like to get in
touch with private
owners.

In case you have
any doubts, please
contact us at:

List of accomodation in Metz

Long-term stay – 2024-2025



FLAT SHARE "COLIVING"



*Glossary and abbreviations [here](#)

Address & Contact

Types of accomodation

[Koloc' à projets solidaires](#)
[Kaps](#)

[Un toit 2 générations](#)

Contact : afev.metz@gmail.com
Tel. N°: +33(0)6 29 34 11 03
Application form on [Kaps website](#)

Intergenerational flat-sharing for residents of working-class neighbourhoods. Kaps is managed by AFEV.
For students and young professionals (18-30)

Association Un toit 2 Générations
Pôle des Lauriers, 3 bis Rue D'Anjou, 57070 Metz
Tel. N°: +33(0)3 87 50 23 21

Intergenerational flat-sharing in a senior citizen's home
For students and young professionals (18-30)
Minimum level of French required



Beware of scams:
be careful and only
book on official
websites if you
would like to get in
touch with private
owners.

In case you have
any doubts, please
contact us at:

List of accomodation in Metz

Long-term stay – 2024-2025



INDIVIDUAL HOUSING
REAL ESTATE AGENCIES



*Glossary and abbreviations [here](#)



SUGGESTION OF REFERENCED
WEBSITES

[Benedic](#)

[Agence
Valentin](#)

[St Thiebault
immo](#)

[Century 21](#)

[Citya](#)

[Fnaim](#)

[Foncia](#)

[Guy
Hocquet](#)

[La Forêt](#)

[Nestenn](#)

[Nexity](#)

[Orpi](#)

Agency fees will be charged for all rental contracts signed through a real estate agency in France.

For more information about agency fees, please visit the [Service Public website](#).

List of accomodation in Metz

Long-term stay – 2024-2025



INDIVIDUAL HOUSING SOCIAL HOUSING/H.L.M.

Priority to families



*Glossary and abbreviations [here](#)



[Batigère Grand Est](#)

Address & Contact

6 Place Saint Martin, 57000 Metz
Tel. N°: +33(0)3 87 71 11 11
Contact form on the [official website](#)

[Eurométropole
Metz Habitat](#)

Agencies in several locations in Metz
Tel. N°: +33(0)3 87 75 03 40
Contact form on the [official website](#)

[Moselis](#)

Agencies in several locations in Metz
Tel. N°: +33(0)3 87 55 75 00
Contact form on the [official website](#)

[Vivest](#)

191 Avenue André Malraux, 57000 Metz
Tel. N°: +33(0)9 77 42 57 57
Contact form on the [official website](#)

Subject to income
conditions.

For further
information, visit
[Service Public](#)
website.

To apply for social
housing (HLM), please
submit your application
online or at the office.

You can also apply for
social housing on :
[https://www.demande-
logement-
social.gouv.fr/](https://www.demande-logement-social.gouv.fr/)

List of accomodation in Metz

Long-term stay – 2024-2025



INDIVIDUAL HOUSING PRIVATE RENTALS



*Glossary and abbreviations [here](#) 



SUGGESTION OF REFERENCED WEBSITES

[Le Bon Coin](#)

[ImmoJeune](#)

[Locservice](#)

[PAP
Particulier à Particulier](#)

[Paru Vendu](#)

[Seloger.com](#)

Site officiel

Types de logements

Spécificités

<https://www.leboncoin.fr/>

Individual or shared apartments, furnished or unfurnished. Rent excluding charges (*HC) or including charges (*CC).

Ads from professional or private owners. Create a free account to get the contact details.

<https://www.immojeune.com/>

Accommodation in student residences, individual rentals or shared apartments. For students and young professionals (18-30).

Free access to housing offers by creating an account and completing an online application.

<https://www.locservice.fr/locataires/>

Individual or shared apartments, furnished or unfurnished. From the rental request, direct contact with owners. No agency fees.

Registration fees: 34€ for 1 year (29€ for students) to create your rental request.

<https://www.pap.fr/>

Individual apartments, furnished or unfurnished. Rent including charges (*CC).

Direct contact with private owners. Create an account for free to follow your email alerts, messages or favorite ads.

<https://www.paruvendu.fr/immobilier/>

Individual apartments, furnished or unfurnished. Rent excluding charges (*HC) or including charges (*CC).

Direct contact with private owners or professionals. Create an account for free.

<https://www.seloger.com/>

Individual apartments, furnished or unfurnished. Rent excluding charges (*HC) or including charges (*CC).

Direct contact with private owners or professionals. Create an account for free to update your profile.

Beware of scams:

be careful and only get in touch with private owners and book on the official websites.

We advise you to visit the apartment before booking it.

In case you have any doubts, please contact us at:



GLOSSARY & ABBREVIATIONS

GLOSSARY & ABBREVIATIONS

CC = rent including maintenance charges (check which charges are included)

HC = rent excluding maintenance charges (individual and collective charges to be added)

Kitchenette = fully equipped kitchen area

PRM = People with reduced mobility

Sdb = bathroom

T2 = 2-room apartment (1 bedroom + living room, bathroom, kitchen)

T3 = 3-room apartment (2 bedrooms + living room, bathroom, kitchen)



Are you experiencing difficulties in your housing search ?

Please contact your [Euraxess Center](#).



Téléchargez [ici](#) votre
Guide Logement
Euraxess France

In order to help
you in your search,
feel free to consult
the [glossary of
housing
abbreviations](#).

