



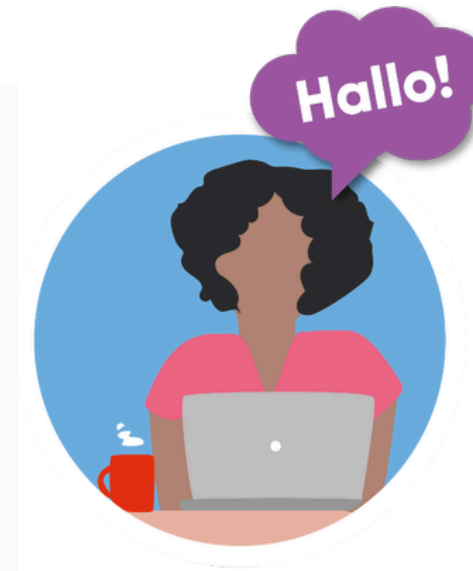
BIENVENU EN FRANCE

PREPARE

YOUR ARRIVAL

UL PREP' DAYS

2026



Webinar Guidelines



Please mute your microphone



Write your questions in the chat



- After each topic, we will answer a few questions.
- The Welcome Desk does not handle admissions, enrolment, or academic matters. For these questions, please contact the academic office of your future faculty, school, or department.
- For any other questions, please email: drie-info-contact@univ-lorraine.fr

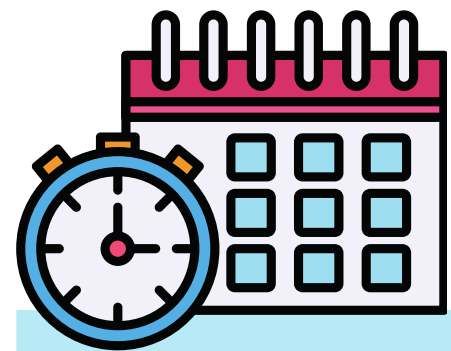
The presentation slides will be sent to you by email



Programme

Prep' Days 1 : Introduction to the Welcome Desk and its services + key steps before departure: budgeting, accommodation, and visa procedures (for non-EU students)

- Wednesday, June 17 (French session)
- Thursday, June 18 (English session)



**2 - 4 pm
UTC+2**

Prep' Days 2 : Essential documents before departure + key steps upon arrival in France (opening a bank account, health insurance and coverage, visa validation) + welcome events at the University of Lorraine.

- Tuesday, June 23 (French session)
- Thursday, June 25 (English session)

No registration is required.

Simply join the webinar using the videoconference links provided above.

The Welcome Desk Team



Isabel Keller

Deputy Director in charge of Welcome services

2 locations :
Nancy and Metz
4 languages fluently spoken



Marion CARREY

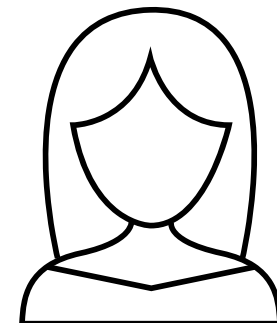
Project coordinator for Bienvenue en France

Morgane LAFON

Welcome and Information Officer
ERASMUS Mundus & ORION



A NANCY



Sophia FESEI-DANGANA - Christine HOCQUIGNY

Reception, information, student support

A METZ



Cara MAMMOSSER - Laurent SCHMIDT

Reception, information, student support

**+ Welcome Desk
in charge of
international PhD
students &
researchers**



How Do We Support You?



BEFORE YOUR ARRIVAL

- Practical information sent to the email address used for your application
- Preparation webinars
- Answers to your individual questions



DURING THE ACADEMIC YEAR

- Information and updates sent to your university email account ("@etu.univ-lorraine.fr")
- Welcome events and on-campus support
- Answers to your individual questions
- Assistance with administrative procedures in cooperation with our partners (CROUS, Prefectures, CPAM, etc.)



IMPORTANT :

- Check your university email ("@etu.univ-lorraine.fr") account regularly.
- The Welcome Desk does not handle admissions, academic programmes, or administrative enrolment. For these matters, please contact your academic office directly.

Our Services for International Students

INFORMATION AND ADMINISTRATIVE SUPPORT



Welcome Website!

- Information and administrative procedures
- Welcome services and events
- Contact information



Welcome Kit

- Information about all support services available to students (Sport, University Libraries, etc.)
- Available in French, English and Spanish



ULPrep' Days :

- Thematic webinars
- From June 17 to June 25
- Available in French and English
- Programme available on the Welcome website (**Welcome Events section**)



WELCOME AND INTEGRATION

Welcome Desk

- Information and support throughout the year
- Assistance with administrative procedures (accommodation, visa, etc.)
- Find contact details and make an appointment via the Welcome website (for Nancy, Metz, or online)



Welcome Days :

- **September 17 in Nancy, September 29 in Metz**
- Open to all new international students
- **Programme available on the Welcome website** (Welcome Events section)



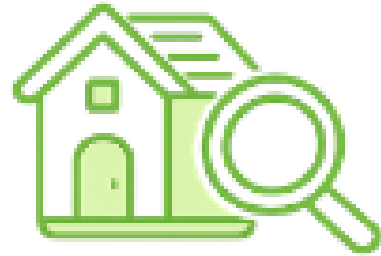
BuddySystem

- Peer mentoring programme connecting international and local students.

Key Steps for your stay in France



1. Application & admission to UL



3. Look for accommodation



5. Apply for a visa (for non-EU nationals)



6. Register at UL & pay the CVEC, if required



8. Validate your visa or apply for a residence permit (for non-EU nationals)



10. Renew your residence permit (for non-EU nationals staying in France)

Webinar 1

Before arrival

On arrival

After

Webinar 2

[More Information here](#)



2. Plan a budget



4. Prepare your housing file: guarantor and insurance



5. Apply for the European Health Insurance Card (EHIC) - EU nationals



7. Open a bank account



9. Register for French Health Insurance (for non-EU students) and take out supplementary health insurance (mutuelle)



Important Information

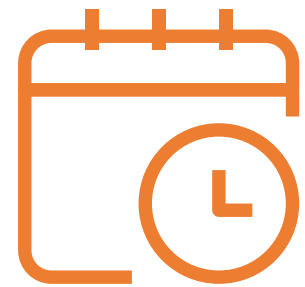


While preparing for your arrival and throughout your stay in France:

Complete all required administrative procedures.

Be thorough and careful:

- Read all instructions and procedures carefully.
- Follow the required steps and deadlines.
- Submit all requested documents.
- Check that your documents meet all requirements (validity dates, required information, translations, etc.)



Respect deadlines:

- If you do not complete your procedures within the required deadlines, your application may be delayed and you could encounter difficulties during your stay in France.

Keep all public administration informed if there are any changes to your situation:

- Change of address: provide your new address.
- Change of phone number or email address.
- Change in your personal situation (employment, marriage, etc.).



Do not let a problem become worse. Contact us as soon as possible if you need assistance.



PREPARING A BUDGET



information available on the Welcome website:

- [Assistance and steps for your stay in France](#)
- [Planning and managing your budget](#)



Why should you have a budget?



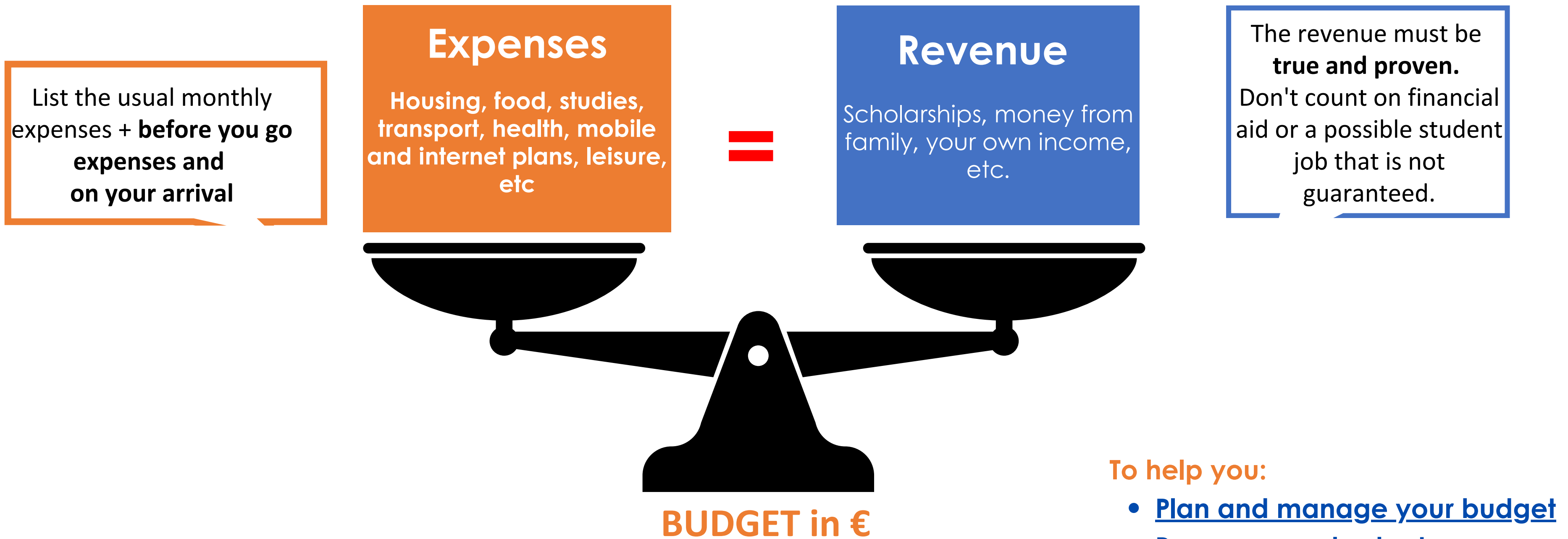
The first step before deciding to study in France

- Check your budget before departure: you will need to pay your enrolment fees and cover your living expenses in France.
- **Non-EU students: a minimum of €615 per month (indicative amount, subject to change) should be proved for** visa and throughout your stay in France.
- In fact, plan for €800 to €900 per month to cover your living expenses comfortably.
- **The cost of living in France could be higher than in your home country. Living costs have increased significantly in recent years, while financial support has become more limited.**
- An insufficient budget may have a negative impact on both your studies and your well-being.



Your budget

It must be real and balanced



To help you:

- [Plan and manage your budget](#)
- [Prepare your budget](#)

Other expenses to consider



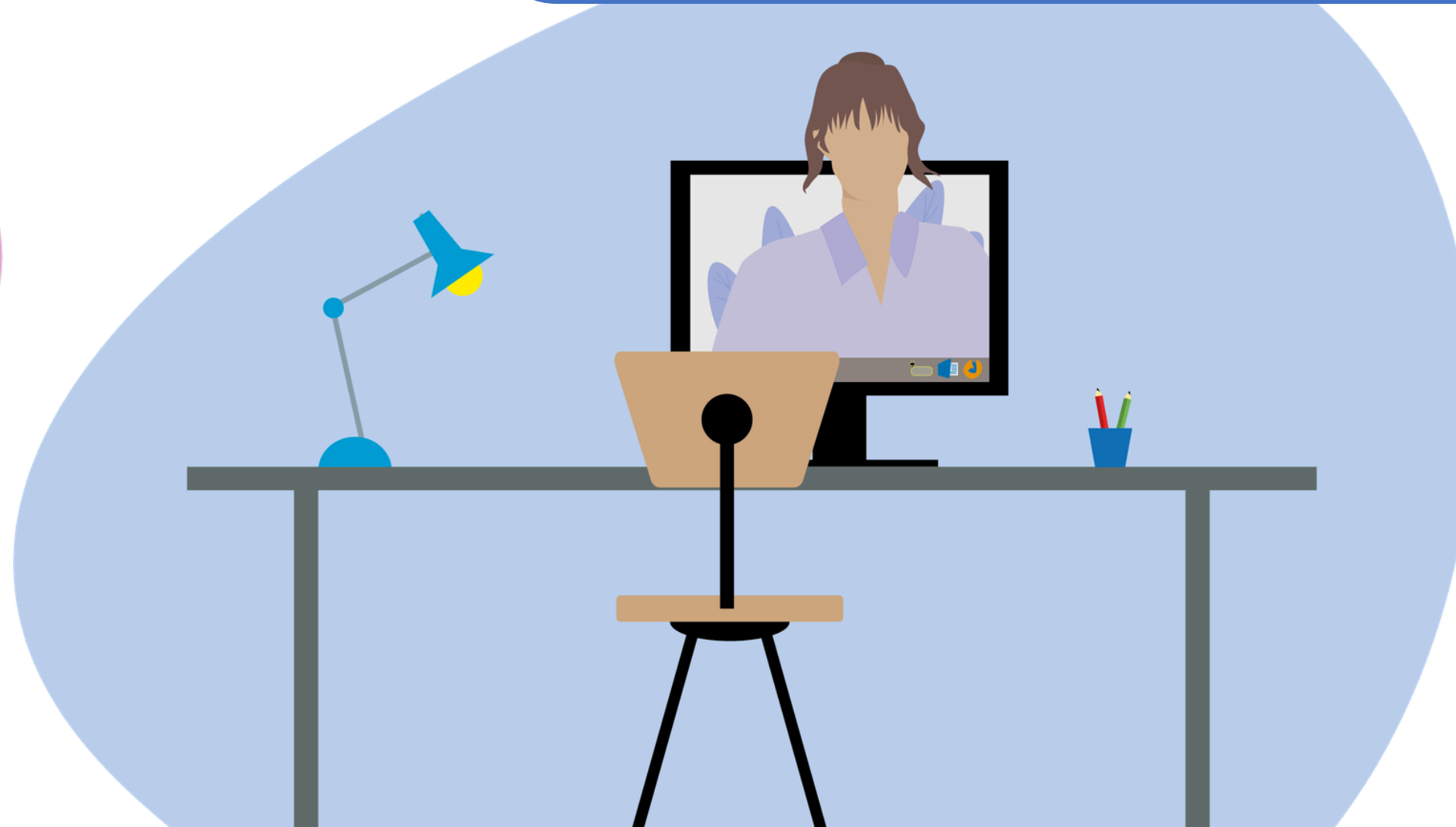
Before you go

- **Visa fees** (depending on your country of residence)
- **Accommodation**
 - If Crous accommodation: booking fee (€70) + security deposit (1 month's rent) + 1st month's rent
 - If private accommodation: booking (or agency) fee
- **Home and civil liability insurance: about € 30/year**
- **Flight, train or bus ticket**
- **Translation of official documents**

On arrival

- **Registration fee + CVEC (€ 105, except exchange students)**
- **Visa validation (if VLS-TS visa): €100 or residence permit application: €100 - €150**
- **Housing:**
 - If private accommodation: rent for the current month, security deposit + opening of gas, electricity, water meters (if individual housing)
 - If unfurnished accommodation: furniture and equipment
- **Home and civil liability insurance: about 30€/year (if not already purchased)**
- **Transportation card**
- **Cleaning products, and what you need for your room**

Any questions
about preparing your
budget?





FINDING ACCOMMODATION



information available on the Welcome website:

- [Assistance and steps for your stay in France](#)
- [Finding accommodation](#)



Important Information

Why Is looking for an Accommodation now so Important?



- If you are a non-EU student, you must have an accommodation before applying for your visa.
- Do not come to France without an accommodation booked for the academic year. Finding an accommodation at the beginning of the academic year is very difficult, and the remaining options are often more expensive.
- Start looking for an accommodation as early as possible.
- **Beware of scams:** never pay for a housing certificate without a real accommodation booking.
- **Université de Lorraine can't book an accommodation on your behalf and cannot provide accommodation certificates.**



Finding Accommodation : Overview

1. Steps to book an accommodation

2. The different types of housing

3. How to search for and book an accommodation ?

- CROUS accommodation (public student residences)
- Other accommodation options (private student residences, studios, shared accommodation, etc.)
- Studapart

4. How to Prepare your housing file (rental application) ?

- Required documents and insurance to book an accommodation



Steps to find accommodation

Search for accommodation

Check our lists of housing options on our Welcome! Website



Prepare the requested documents

Identity documents
Proof of financial resources
Physical or moral guarantor, etc.



Welcome to your new "Home"!

It's time to complete the inventory and condition report (*état des lieux*) with your landlord.



Contact the residences, or private owners

Write your requests and emails in French.



Confirm your booking Sign the rental lease Pay for the reservation

Beware of scams: if in doubt, [contact us](#).

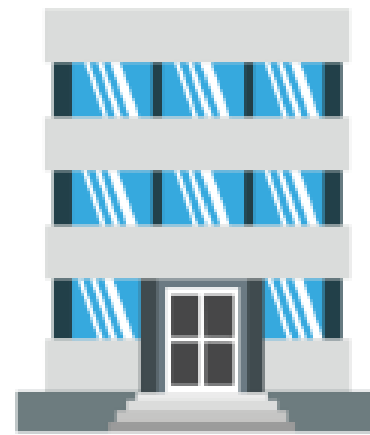


The different types of housing

Studios and apartments
Fully equipped and furnished

Less expensive

Most of the time : "All-inclusive"
rent (water, gas, electricity)
with services



RESIDENCES

Private or Public Student
Residences (CROUS)

Secure booking
on an official website

Generally accept
Visale or other moral guarantors

or

Individual dwellings
(house, apartment)



PRIVATE HOUSING

Individual dwellings:
plan to take out
electricity, gas and
water contracts,...

Remote booking
complicated and risky:
Best to visit before booking!
(at least virtually)

Shared housing:
- flatshare
- homestay

Furnished
or
Unfurnished

Booking a CROUS Accommodation: Key Steps



1. Create your MesServices.Etudiant account



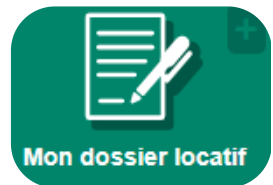
2. Book your accommodation (choose your accommodation)

- The booking process depends on your status: Exchange or individual student
- Individual mobility (Free-mover) student (applications open from 7 July)
- Check the relevant guide on the Welcome website under "Finding Accommodation".



3. Confirm your booking and pay the €70 reservation fee. A bank card is required.

- Respect the deadlines indicated by CROUS.
- Download your proof of accommodation, which may be required for your visa application.



4. Complete your housing file

- Guarantor (you need your visa before applying for the Visale guarantee)
- Home insurance
- Security deposit and first rent payment before arrival

→ All steps are explained in detail in the CROUS guides available on the Welcome website.

Important information



- Comply with (respect) the deadlines set by CROUS.
- Non-EU nationals: start your accommodation and visa applications at the same time.
- Contact your residence and arrange your check-in before arriving in France.
- Inform your residence if you expect a delay or encounter any difficulties.
- Rent payments start on 1 September, even if you arrive later.



→ **Check the step-by-step guides** on the Welcome website for detailed information about required documents, deadlines, fees and procedures:

- [CROUS Guide for Exchange and Mobility Programme Students](#)
- [CROUS Guide for Individual International Students](#)

Booking Private Accommodation



Types of Private Accommodation

- Private student residences
- Apartments or studios rented through landlords or real estate agencies
- Shared accommodation (flatshares) or Intergenerational housing

How to Find Private Accommodation Before Your Arrival ?

=> Using secure online platforms :

- **Studapart** (University of Lorraine partner, see next slide)
- **Lokaviz** (CROUS platform listing private accommodation and shared housing offers)
- **List of student residences** available on the Welcome website
- **Real estate agencies:** You can browse their websites, but be aware that agency fees may apply.
- **Beware of Scams:** Avoid using Leboncoin when booking accommodation from abroad, as the risk of scams is high.
- **Prefer platforms with secure payments.** For example, Studapart doesn't transfer the security deposit to the landlord until you arrive and confirm that the accommodation matches the description.



Booking Accommodation with STUDAPART

What Is Studapart?



- A platform offering furnished accommodation provided by private landlords, real estate agencies and student residences located near university campuses.
- Reservation fees apply.
- Minimum stay: 1 month.

Advantages



- Personalised support throughout your accommodation search, from application to booking.
- Multilingual support team.
- **A discount is available** for Université de Lorraine students (partner).
- **Quick booking:** about 48 hours / no visa needed / proof of residence issued right after (Important: communicate online with the owner before booking)
- **Booking certificate can be used for visa application**
- **Optional services**, including cancellation option, home insurance and rental guarantees.
- **Secure booking process:** you pay the platform directly. The money is transferred to the landlord only after your arrival and confirmation that the accommodation matches the description.

Booking Accommodation with STUDAPART



How to book accommodation with Studapart ?

- All information is available on the "[Finding Accommodation](#)" (Welcome website).
- [Access to the Studapart platform here.](#)

Upcoming Studapart Webinars to Help You Find Accommodation



Choose one of the following dates:

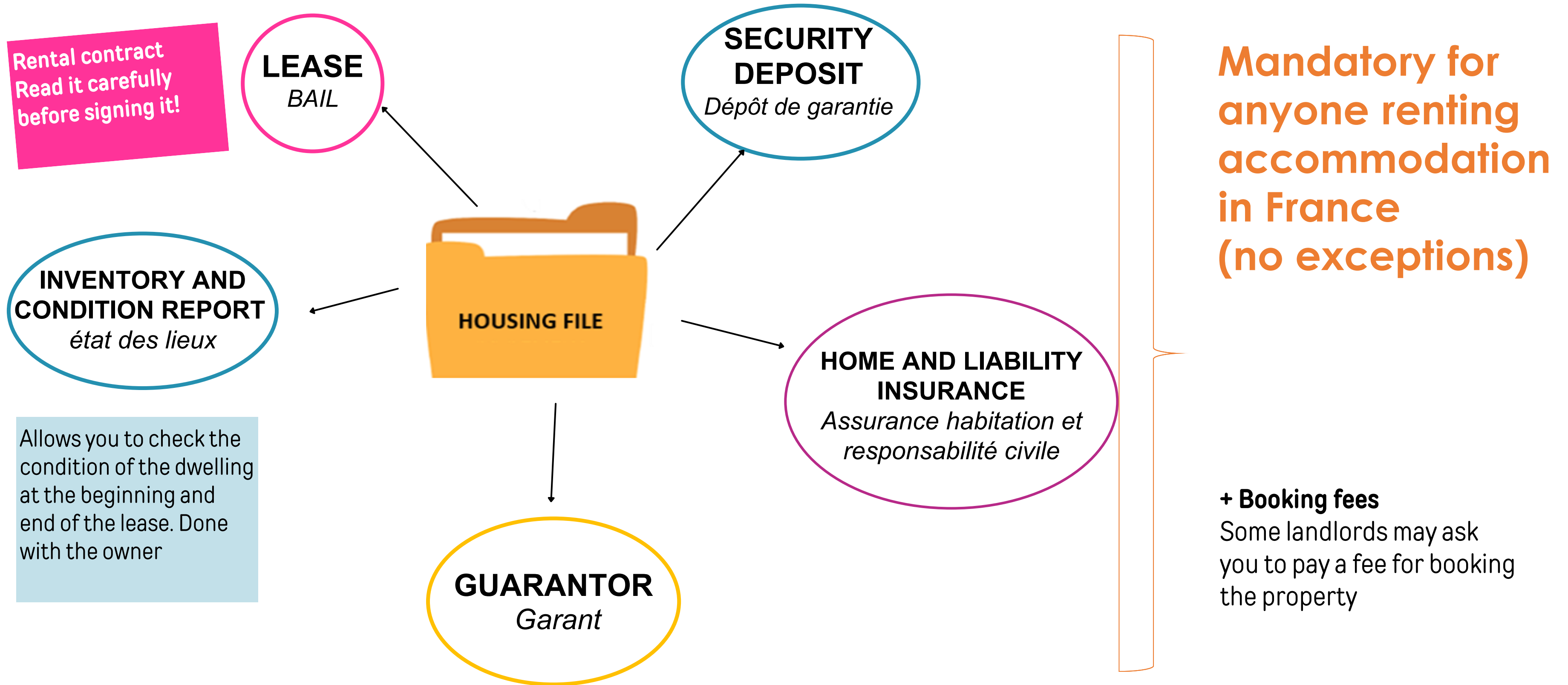
- Jun 24th, at 1:00 PM
- July 1st, at 5:00 PM
- July 21st, at 3:00 PM
- August 20 at 11:00 AM

Register for a webinar using [this link.](#)

Documents required for your housing file



The housing file in France



“Garant” et “garantie” : what's the difference? ?

LE GARANT *Guarantor*



DÉPÔT DE GARANTIE *Security deposit*



Person or organization who undertakes to pay the rent if you don't.

Amount paid to the landlord in the event of damage to the property

The guarantor

A person or an organization that agrees to pay your rent if you are unable to do so.
Different from the financial sponsor used to prove sufficient funds for a visa application.



2 TYPES OF GUARANTORS



PHYSICAL GUARANTOR (INDIVIDUAL)

- ✓ French citizen or foreign resident with legal status in France
- ✓ Must live in France
- ✓ Must have sufficient financial resources

Required documents:

- ID card or passport
- Proof of address
- Payslips
- Tax notice (income tax assessment), etc.

→ If you have a guarantor in France, ask them to prepare these documents as soon as possible.

INSTITUTIONAL GUARANTOR (ORGANISATION)

✓ **if you are under 31 years old:** the Visale guarantee is free of charge. For non-EU students, it can only be requested after obtaining your visa.

✓ **If you are 31 years old or over:** private paid guarantor services are available, such as SmartGarant, Cautioneo or Garantme.

→ If you book accommodation through Studapart, you can benefit from a guarantor service (additional fees apply).



→ For more information, visit our Welcome website here.



Security Deposit



What is it?

A security deposit is a sum of money paid to the landlord at the start of the rental period. It is used to cover any damage to the accommodation.



When do you pay it?

When you collect your keys or before you arrive (CROUS residences) / international bank transfer may be required

Amount

- Furnished accommodation: up to 2 months' rent (excluding charges)
- Unfurnished accommodation: up to 1 month's rent (excluding charges)



Good to know

- Always ask for payment receipt.

Refund

The security deposit is returned to you after you move out, unless repairs are required in the accommodation

→ [More information here](#)



Home Insurance and Personal Liability Insurance



Home Insurance

Protects (depending on your insurance policy):

- Your room, studio or apartment
- Your computer, clothes, furniture, etc.
- In case of fire, water damage (leaks) or theft

Mandatory to move into your accommodation.



Personal Liability Insurance

Protects you if you accidentally cause damage to someone else:

- You injure someone
- You break another person's glasses
- You damage someone's phone, computer or bicycle

Mandatory to enroll at the university.



Key Information

- Home insurance and personal liability insurance are often both included in the same insurance policy
- CROUS requires proof of home insurance before your arrival.

→ For more information, [visit our Welcome website here.](#)



If you are homestayng:
Make sure you have personal liability insurance coverage.

CAF housing benefit (APL)



From 1 July 2026, students who are not citizens of the European Union (EU), the European Economic Area (EEA) and Switzerland and do not receive a French government grant based on social criteria will no longer be eligible for APL.

The following students will remain eligible:

- Students from the European Union, the European Economic Area and Switzerland;
- Students receiving French government grant based on social criteria, regardless of their nationality.s
- Students receiving grants from the Eiffel or Major programs, French Embassy grants, or French ministerial grants

Please note: APL are also subject to other criteria

From 1 July 2026	Eligible for APL (French Housing Benefit) ?
EU / EEA / Swiss student	✓ Yes
Non-EU student receiving a French government grant based on social criteria	✓ Yes
Non-EU student not receiving French government grant based on social criteria	✗ No

Important Information

If you are a student of non-EU national:

- Find an accommodation before applying for your visa.
- Apply for the Visale guarantee after obtaining your visa, as it is required to complete your application.



Before booking your accommodation

- Check that your bank card can be used for international payments.
- Plan your budget, including rent and additional costs (electricity, gas, internet, service charges, etc.).

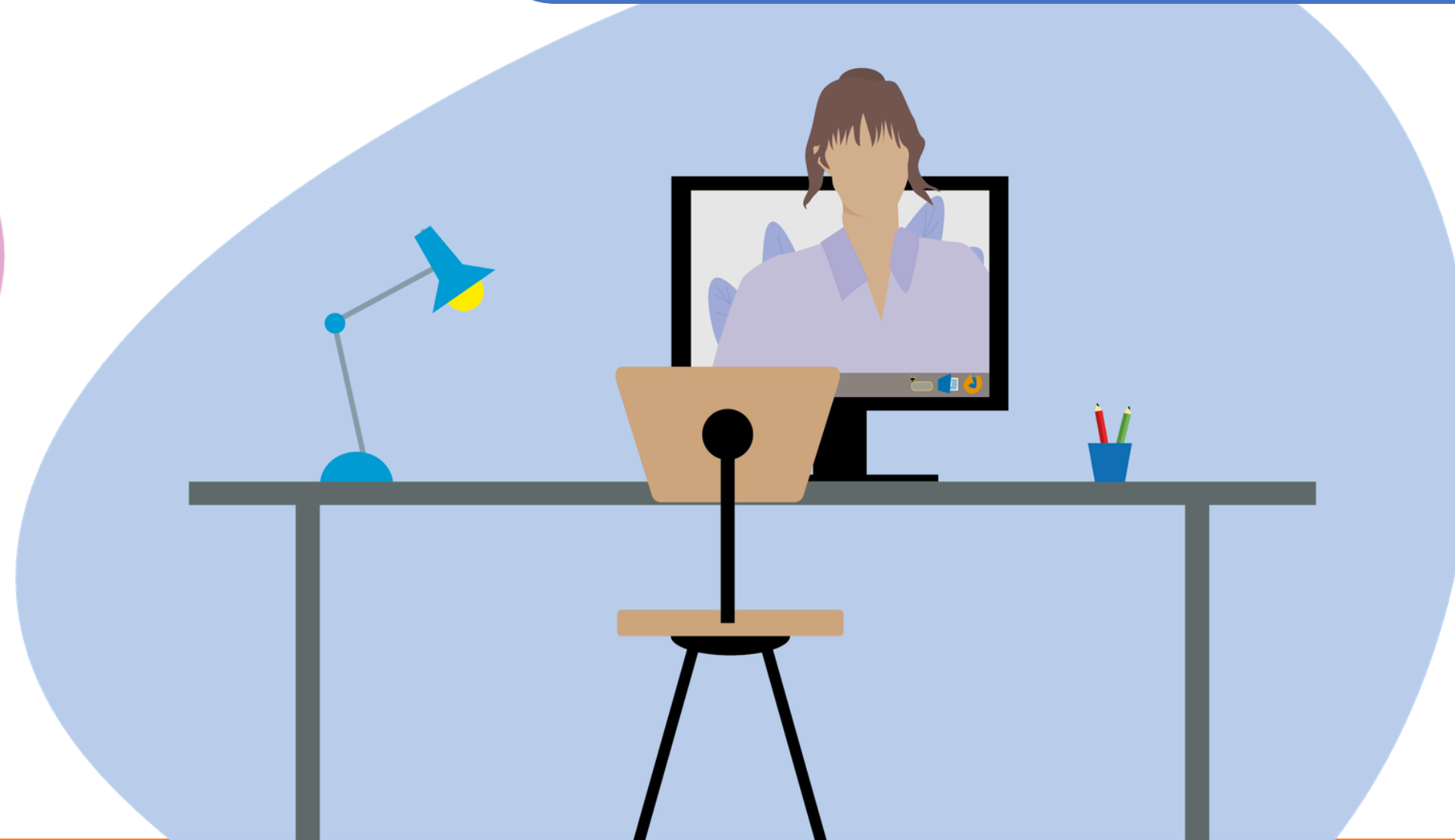


Important

- Always ask for proof of your accommodation booking.
- Always keep the receipt of your payments.
- Avoid paying in cash.
- Do not pay rent or a security deposit before signing the lease and receiving the keys (except for CROUS and Studapart accommodation).
- If you have a dispute with your landlord, contact [ADIL](#) or [l'ANIL](#) for advice and support.



Do you have any questions about accommodation?





**Students who are nationals of an EU country:
this is the end of the webinar for you.**

**The next topic will be:
Visa application process**





We invite you to take a 5-minute break.



APPLYING FOR A VISA



Information available on the Welcome website:

- Assistance and steps for your stay in France
- The visa



Visa and Residence Permit: What's the Difference?



VISA = Permission to enter France

A visa allows a non-EU national **to enter France**.

→ Issued by the French Consulate in your country of residence before departure, depending on the purpose and length of your stay (studies, internship, etc.).



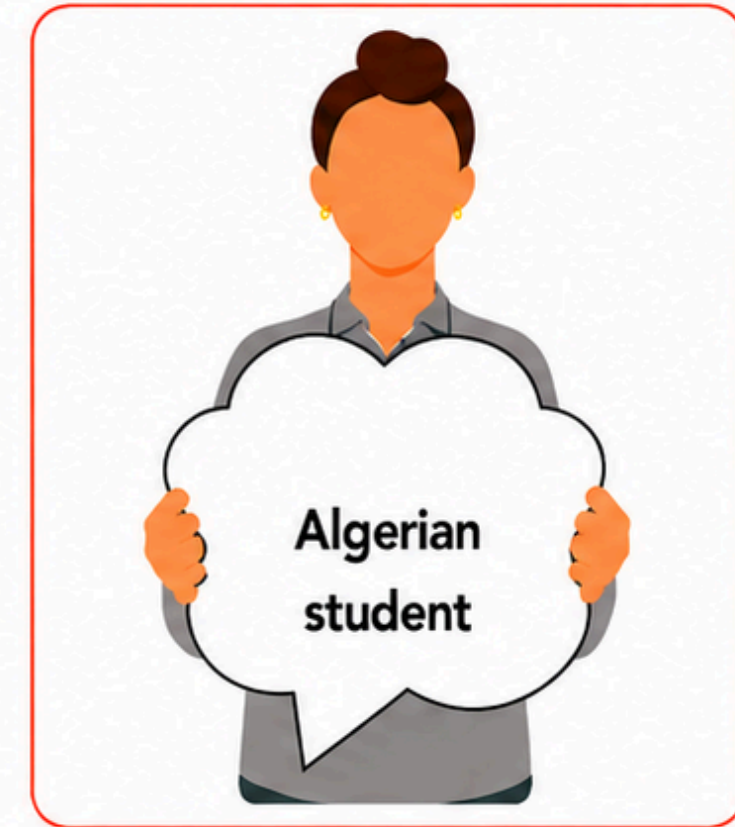
RESIDENCE PERMIT = Authorization to Stay in France

A residence permit allows a non-EU national **to legally live in France for a specific period and purpose** (studies, internship, etc.).

→ Issued by the French authorities in France (Prefecture), depending on the type of visa you hold.

The different types of visas

The visa issued depends on the purpose and duration of your stay



↓
LONG-STAY VISA
EQUIVALENT TO A RESIDENCE PERMIT
STUDENT VLS-TS
4 to 12 months

↓
LONG-STAY VISA
EQUIVALENT TO A RESIDENCE PERMIT
TRAINEE VLS-TS
3 to 6 months

↓
LONG-STAY VISA
STUDENT MOBILITY VLS

↓
LONG-STAY VISA
STUDENT VLS



TO BE VALIDATED WITHIN 3 MONTHS UPON ARRIVAL.

Webinar 2



RESIDENCE PERMIT TO BE REQUESTED UPON ARRIVAL
AND BEFORE THE VISA EXPIRES.

Webinar 2



SPECIAL CASES



Visa C "Competitive Examination" : residence permit application only in case of successful admission following the competitive examination.



Visa D "Minor Student" : residence permit application must be submitted within the 2 months before the student's 18th birthday and before the visa expires.

Important information



- **Not all visas allow you to apply for a residence permit.**
- **Once you are in France, you cannot change your visa category.**

For example:

- An internship visa cannot be converted into a student visa or residence permit.
- A tourist visa cannot be converted into a student visa or residence permit.

→ **In these situations, you must apply for a student visa at the French Consulate before travelling to France.**

→ **Arrive in France with a visa that matches your situation.**

How to Apply for a Visa?

Check [here](#) whether your country is covered by the "Études en France" (EEF) procedure.



→ Yes, my country is part of the EEF procedure

1. Complete your Études en France (EEF) application.
2. Receive your registration certificate containing your EEF number.
3. Apply for your visa on [the France-Visas website](#) and enter your EEF number.
4. Book an appointment with the French Consulate in your country of residence.

💡 **The EEF application fee gives you a 50% discount on the visa application fee.**

→ No, my country is not part of the EEF procedure

1. Apply directly for your visa on [the France-Visas website](#).
2. Leave the "EEF number" field blank.
3. Book an appointment with the French Consulate in your country of residence.

The visa application fee is €150.

EEF Steps Depending on Your Status

**Free-Mover Student
(Individual Mobility)**



Apply to the university
through the EEF procedure



If admitted by institution



**EEF Visa Application
(using your EEF registration
number)**

Exchange Student



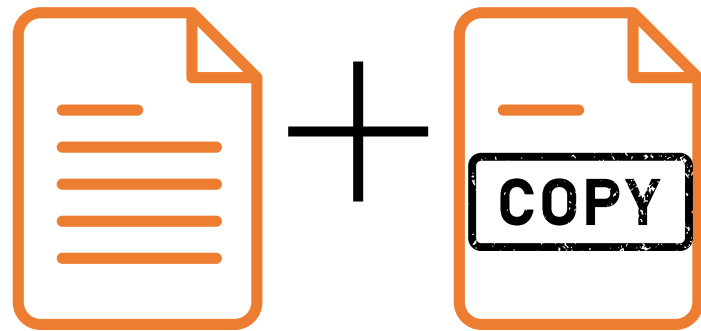
Register on the EEF platform using the
"I have already been accepted" procedure
(cooperation agreement and admission letter
required)

More information here [ici](#)



What Documents Do You Need?

Originals + copies



- Valid passport + 2 ICAO-compliant passport photos
- **Proof of the purpose of your stay in France:** Admission letter, university admission notification obtained through Études en France (EEF), internship agreement, etc.
- **Proof of sufficient financial resources (minimum €615 per month, increase expected):** scholarship certificate, certificate of regular and guaranteed bank transfers, financial support certificate from a guarantor (in France or abroad), etc.
- **Proof of accommodation:** A document showing that you have accommodation close to your place of study in France (for example, accommodation in Nancy if you will study in Nancy, not in Paris).
- **For students from countries covered by the Études en France (EEF) procedure:** Proof of registration on the “Études en France” platform (EEF number).
- **For students not covered by the EEF procedure:** Copy of your most recent diploma.



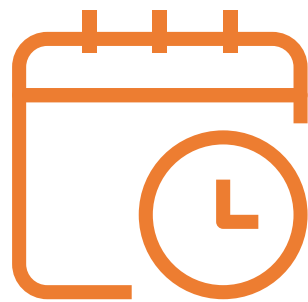
- Based on the documents provided, the French consulate will decide whether to issue a visa and which type of visa to grant.
- This list of documents is provided for guidance only. The required documents may vary depending on your country of residence.

Important Information



Before submitting your visa application: Check that your application file is complete.

- All required documents must be provided.
- An incomplete application will result in a request for additional documents and longer processing times.
- This may delay your arrival in France.



Respect the university's deadline for arrival and enrolment.

If your visa is issued late:

- Contact your academic department to find out whether a late arrival can be authorised.
- Do not purchase your travel tickets until you have received your visa.
- Without approval from your academic department, you may not be allowed to join your programme.

Even if the delay is beyond your control, do not travel to France without approval from your academic department or host institution at University de Lorraine.



Your department may refuse your enrollment because you have missed important classes at the beginning of the academic year. A late arrival may affect your chances of academic success.

Questions About Your Visa Application?



Contact Our Welcome Desks



In Nancy

- +33 (0)3 72 74 05 04
- drie-accueil-nancy-contact@univ-lorraine.fr



In Metz

- +33 (0)3 72 74 05 14
- drie-accueil-metz-contact@univ-lorraine.fr



Book an Appointment (Online or In Person)

univ-lorraine.fr/welcome/contact



Welcome Website, "Contact Us" Section

univ-lorraine.fr/welcome



Our Next Webinar

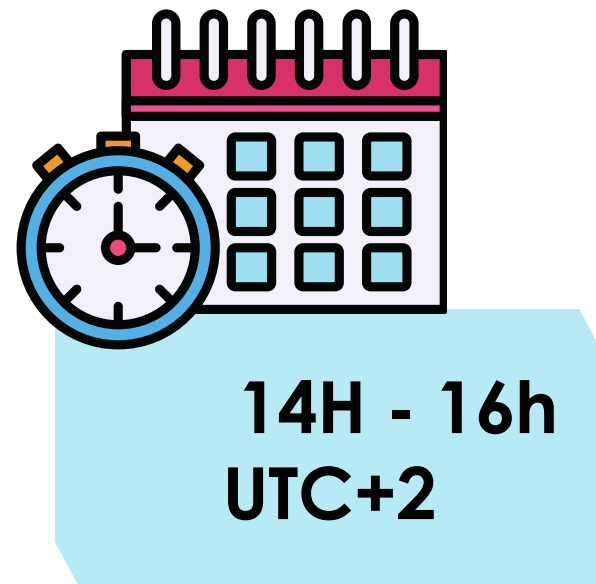
Prep' Days 2

Join us to learn about:

- Essential documents to prepare before your departure

and Arrival procedures in France:

- Opening a bank account
- Health insurance and healthcare
- Welcome events
- Visa validation (for non-EU students only)



Connect using the links below:

- [French session, Tuesday 23 June](#)
- [English session, Thursday 25 June](#)

Aucune inscription n'est nécessaire.

