

We are international

Université de Lorraine has developed a large range of international activities, including student exchanges, shared degrees, research collaborations and staff mobility, working hand in hand with partners all around the globe. With its 10,000 international students, Université de Lorraine is **the leading French university in Erasmus mobility**.

Being located at the heart of Europe, Université de Lorraine plays a major role in the cross-border academic network called University of the Greater Region, in partnership with the Technische Universität Kaiserslautern, the University of Liège, University of Luxembourg, Saarland University and Trier University.



**The leading French university in Erasmus
outgoing mobility (students sent abroad)**



**UNIVERSITÉ
DE LORRAINE**

Making lifelong learning journey real

Embracing all forms of knowledge, Université de Lorraine provides its 60,000 students with programmes in every field, from undergraduate to postgraduate degrees and PhD. We offer tailored solutions to suit everyone's lifelong learning journey.

Embarked on a process of teaching transformation, Université de Lorraine is redesigning and adapting its learning areas, as well as its living spaces, in line with new learning, socialisation and collaboration approaches.

EMPLOYABILITY

Students holding
a professional degree: **93%**

Average monthly salary: 1,762 €

Students holding
a master's degree: **90%**

Average monthly salary: 2,006 €

Students holding an engineering
degree: **96%**

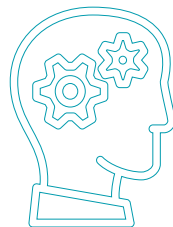
Average monthly salary: 2,508 €

Students holding a PhD: **91%**

Average monthly salary: 2,649 €



n°1



**Leading French
university in terms of
graduate engineers**

Encouraging student entrepreneurship

Since 2011, Université de Lorraine has been offering a global approach aimed at stimulating entrepreneurship among its students. Thanks to Pôle entrepreneuriat étudiant de Lorraine – Lorraine student entrepreneurship centre (PeeL), students can develop their entrepreneurial ideas and turn them into business. This programme includes training, awareness raising and networking events.



**A top-tier
entrepreneurial
university
in France**



Innovating and being a part of society's evolution

With 60 research labs and nearly 3,900 faculty members, Université de Lorraine boasts comprehensive and exciting curricula in a great diversity of fields, with high international visibility. Contributing to the “Initiatives of Excellence” call for projects as part of the Investments for the Future programme, we created Lorraine Université d'Excellence (LUE).

The overarching aim of this initiative is to use the expertise of all of the LUE partners to address six major societal, economic and ecological challenges



- 
- A close-up photograph of a gloved hand holding a multi-channel pipette tip. The tip is white and has several colored bands (green, yellow, red, blue) near the tip. The background is blurred, showing a pink surface and a white container with the number '300' on it.
- ▣ Control of the entire materials value chain
 - ▣ Sustainable management of natural resources and of the environment
 - ▣ Development of energies of the future and support with energy transition
 - ▣ Trust in the digital world
 - ▣ Personalised medicine and engineering to serve healthcare and ageing
 - ▣ Language and knowledge engineering



Building a stimulating environment dedicated to PhD students

Université de Lorraine has built a blossoming PhD scene

1,800 PhD students

90 different nationalities

8 doctoral schools

400 PhD theses defended each year

My Doc'Door

which offers enhanced services to PhD students

Creating a thriving student life

Beyond receiving a great education, the extraordinary range of opportunities allows our students to feel design their own Université de Lorraine experience. With a great diversity of student associations, many sport activities, a variety of libraries and cultural venues, including Espace Bernard-Marie Koltès - a student theatre located on Saulcy campus in Metz, Université de Lorraine has a stimulating, innovative and energising student and campus life.

Renowned for its cultural dedication and social responsibility, Université de Lorraine strives to provide a rich and dynamic experience and quality of life to all of its students and employees on all of its campuses

Powering economic and social growth in Lorraine

Université de Lorraine is a major contributor to the economic and social growth in Lorraine. Five initiatives are dedicated to companies and partners

▣ **Lifelong learning programmes**

+10,000 students are on internships and 11,000 employees and job seekers are engaged in lifelong training courses.

▣ **Transfer and innovation**

Research at Université de Lorraine is also accessible to our partners, with whom we collaborate annually through +350 contracts representing a turnover of more than 7 million euros.

▣ **Joint innovation**

Université de Lorraine develops collaborative programmes and tools in three main areas: industrial changes, entrepreneurship and societal transformations.

▣ **Université de Lorraine Foundation**

It secures the long-standing alliance between Université de Lorraine, companies and local authorities.

This partnership is characterised by the combination of scientific, entrepreneurial and institutional cultures to boost the economic and social growth in Lorraine.

▣ **Project Engineering Centre**

Our technical centres provide study and expertise services in the fields of composite materials, metrology, electronics, processes, environment, energy, security, geosciences, agri-food industries, textiles, etc.





UNIVERSITÉ
DE LORRAINE

Universality
Creativity
Reflexivity
Solidarity
Responsibility

univ-lorraine.fr

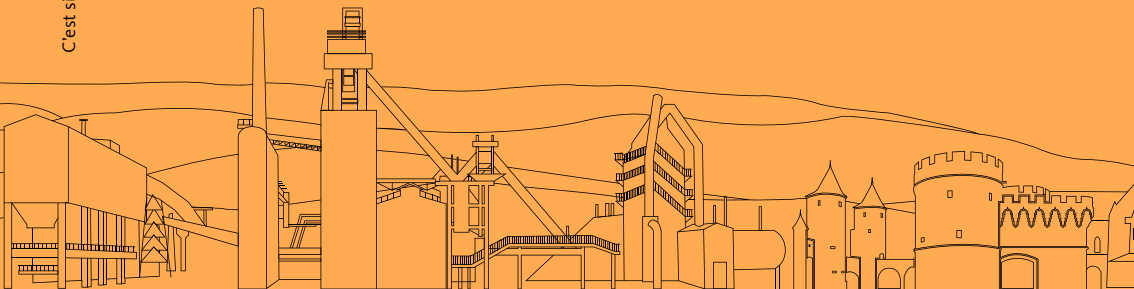


LOIRRAINE
VOUS REVELEZ

HR EXCELLENCE IN RESEARCH



UNIVERSITÉ DE LA
GRANDE RÉGION
UNIVERSITÄT DER
GROSSREGION



Innovation th

60,000

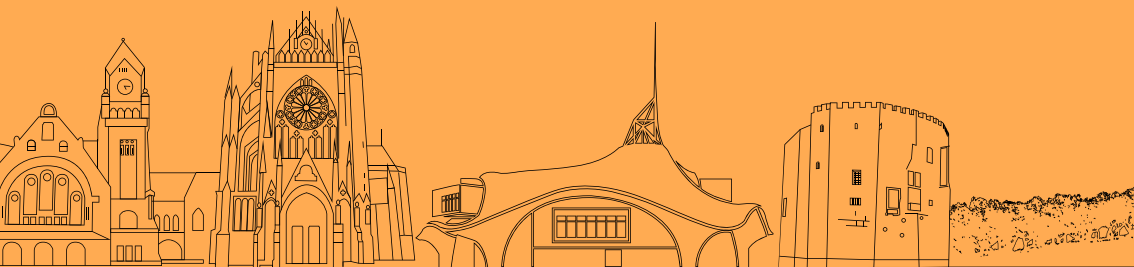


students
including 10,000
international students



400

theses defended
every year



through the dialog



1,800

PhD students



Nancy | Porte de la Craffe | Cathédrale | Arc Héré | Place Stanislas

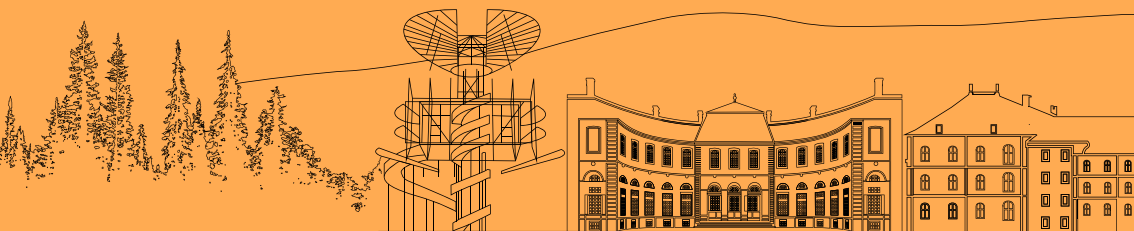
Lunéville | Château

Fo

gue between kno

6,900 
staff members,
including
3,900
faculty members

60 
research labs

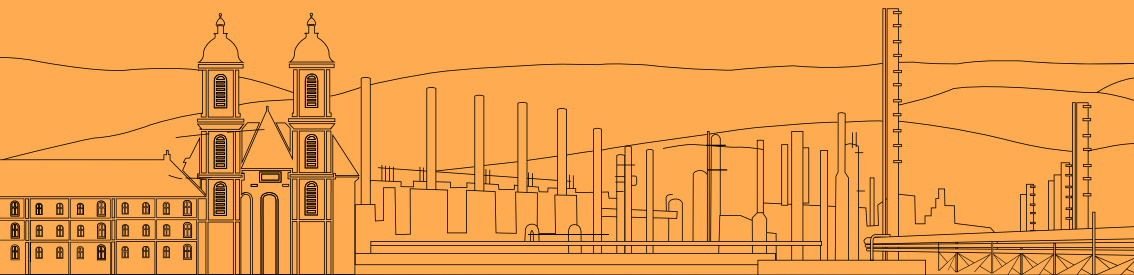


nowledge fields

54 
sites



60
libraries





UNIVERSITÉ
DE LORRAINE

