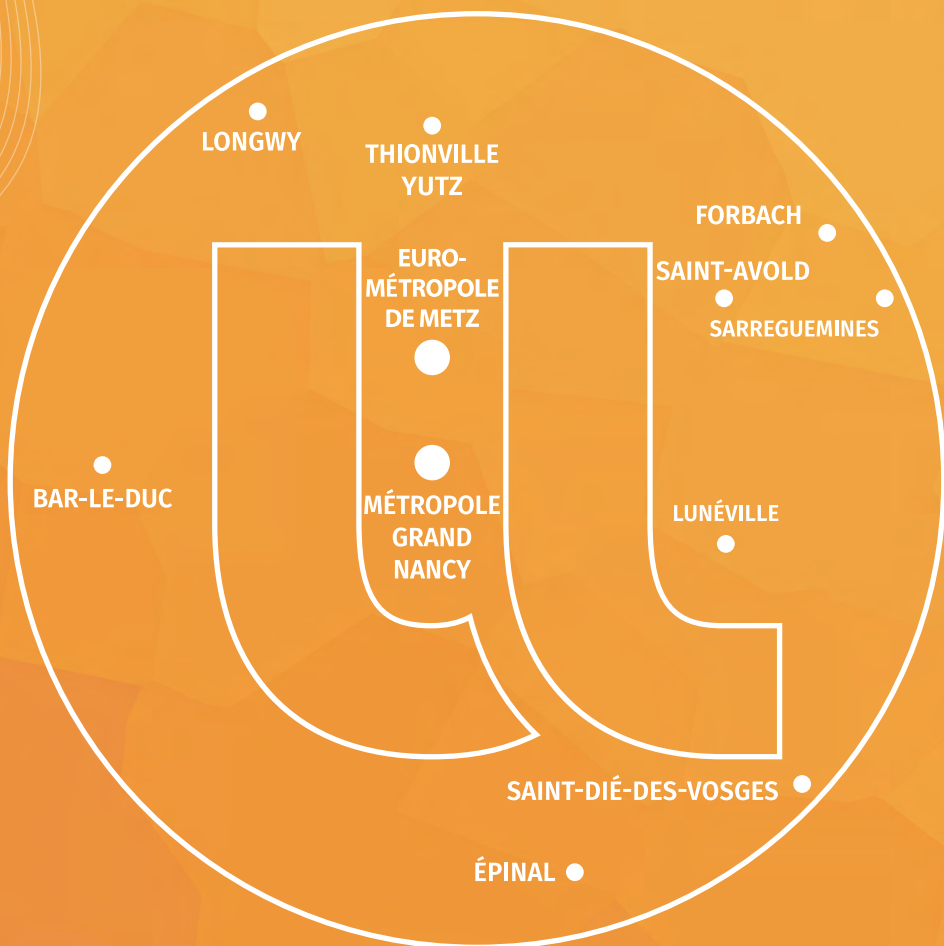




UNIVERSITÉ
DE LORRAINE

Member of **UNYS**



UNIVERSITÉ DE LORRAINE IS
ACTIVELY SHAPING THE
TRANSFORMATIVE TRANSITIONS
OF TOMORROW, BOTH WITHIN ITS
TERRITORIES AND BEYOND.



**INNOVATION
THROUGH
THE DIALOGUE
BETWEEN
KNOWLEDGE FIELDS**



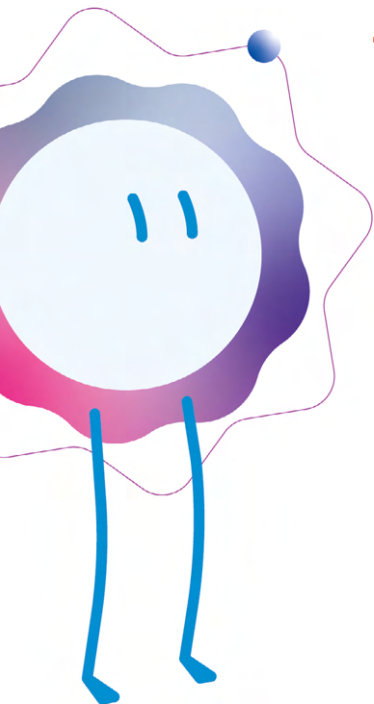
UNIVERSITÉ DE LORRAINE'S MAJOR ACHIEVEMENTS

+ UNYS: A joint banner to promote research and innovation in Lorraine

Unys brings together for the first time in France the major public players in research and innovation in the Lorraine region (University of Lorraine, CNRS, CHRU of Nancy, INRAE, Inria, AgroParisTech, Georgia Tech Europe, Incubateur Lorrain, UL Propuls and SATT Sayens).

This unprecedented alliance aims to facilitate access to scientific expertise, encourage collaboration, and propose concrete solutions to major societal challenges.

Unys embodies a shared vision of open, useful research that is connected to the needs of businesses, communities and citizens, with the aims of sustainability strengthening the impact of science in the territory.



+ Explore Research during training courses

The ORION program's objective is to enable students to discover and practice research. It nurtures the development of a student community that is ready for the challenges of tomorrow. The student research takes a variety of forms: dedicated courses, practical work on Lorraine Initiative of Excellence key platforms, thematic research schools, innovation workshops, multidisciplinary research clubs (student-researcher clubs), laboratory internships at the university, international immersion in the research structures of our academic partners abroad; and is supported by dedicated funding (excellence scholarships, internship bonuses and mobility assistance).



Promoting success from secondary school onwards by strengthening local anchoring

Raising awareness of existing and emerging excellence

The “Éducation & Territoires” program aims to strengthen the local anchoring of higher education in conjunction with the Conférence Universitaire Territoriale. It will also extend the scientific outreach activities supported by the “Science Avec et Pour la Société” label, particularly to secondary schools. This program strengthens the capacity of the Lorraine research site to participate in the European dynamic around the major transitions of our century: energy transition, ecological transition, digital transition, societal transition, while supporting the necessary changes in undergraduate education.



Reinvent learning through digital technology



In collaboration with *Esup Portail* which brings together 90 universities, and the Local Education Authority Nancy-Metz, the project PLEIADES* leans on innovative digital solutions to develop learning methods and facilitate interaction within the university community.

By 2025, the teams will publish the results obtained from the knowledge acquired through the experiment, in particular via the website dedicated to the PLEIADES project.

**Projet Lorrain d'Environnement numérique pour des Apprentissages Durables.*



Increase the dialogue between science and society

The aim of the “Science avec et pour la Société” (SAPS) label is to involve the public in the sharing of knowledge and to support innovative projects that encourage the development of new forms of communication between the fields of science, research and society.

It also aims to create a network of professionals specialising in scientific mediation and culture in Lorraine. This strategic initiative was introduced by the ministère de l'Enseignement supérieur, de la Recherche et de l'Innovation in the 2021 research programming law, with the aim of strengthening the links between these fields within universities.

The implementation of this program Université de Lorraine in collaboration with its partners (CNRS, Inria, Inrae, Inserm and CHRU), is based on three parts :

- Structuring SAPS actions on the Lorraine research site ;
- Support and training for those involved in science outreach, while working collaboratively with the local community ;
- The development of new participatory science initiatives that involve the public while contributing to the advancement of research.



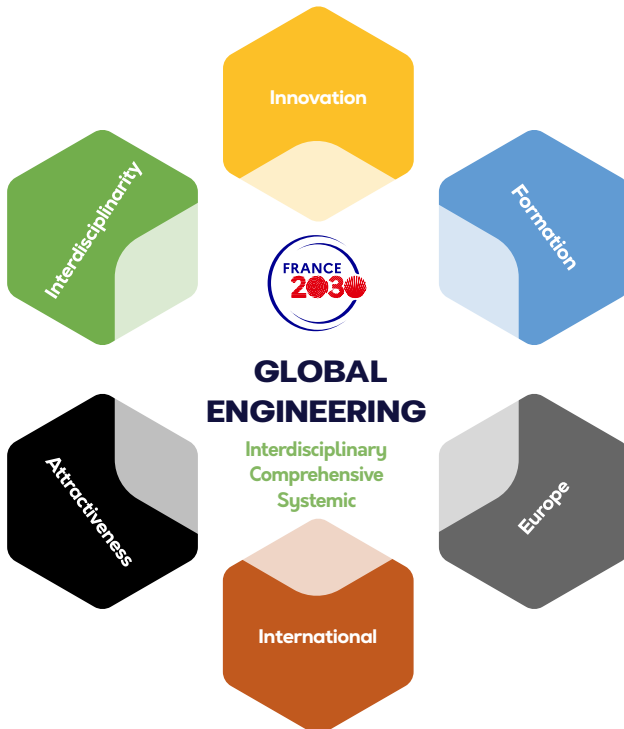


Global engineering serving the planet

The Lorraine Initiative of Excellence (LIE) has been continued in the ISITE (Initiatives-Science-Innovation-Territories-Economy) category of France 2030's *Programmes Investissements d'Avenir* (PIA) in 2021.

ISITE Lorraine draws on Lorraine's academic and socio-economic potential, with a core of expertise in engineering, but also a particularly rich foundation in almost all scientific fields. ISITE Lorraine's ambition is to develop the international leadership and attractiveness of the Lorraine region, in particular by supporting a dynamic of interdisciplinary programmes focused on six major societal challenges: materials in the 21st century, energy transition, green transition, digital transition of industry and society, transitions in society and health.

Led by the Université de Lorraine and its partners (CNRS, CHRU de Nancy, Georgia Tech Europe, Inria, INRAE, Inserm, AgroParisTech), the Lorraine Initiative of Excellence thus makes interdisciplinarity a real driver of scientific, societal and territorial transformation, in a dynamic where research, training, innovation and society interact and enrich each other.



A COMMITTED UNIVERSITY

+ Corporate Social Responsibility (CSR)

The news reminds us daily that the challenges of tomorrow have become the concerns of today. Universities are among the key players in the process of change, thinking about, supporting and even anticipating these transitions. Beyond their traditional education and research missions, they are displaying and asserting their social responsibility. What does this mean ? The aim is to integrate all social environmental, economic and cultural concerns, not only their activities but also in their relations with the world of work, local authorities and others parts of society.



Université de Lorraine is truly engaged. It was built on strong values, which it was keen to highlight in its *Charte des valeurs* approved by its board of directors in 2016 (universality, creativity, reflexivity, solidarity and responsibility).

In this regard, it is keeping pace with changes in society, whether in the areas of equality and diversity, the ecological transition to reduce our impact on global warming, the decline in biodiversity or the depletion of resources in line with the 17 Sustainable Development Goals (SDGs) defined by the United Nations.

The aim ? Proposing a better way of living together, with greater sobriety and inclusion for all.

Two themes encompass the full range of CSR

• Purchasing •

Environmentally demanding purchasing policies have been introduced for all the major purchasing segments (digital, food, scientific equipment, travel), and staff are being made aware of the impact of their purchases.

• Digital •

A proactive strategy has been set up, reinforced by the signing of the digital responsibility charter of the Institut du Numérique Responsable (INR) in 2024 and an annual focus on digital issues to raise awareness and mobilise staff and students to make better use of digital technology.

Ecological transition

The Université de Lorraine's ecological transition strategy is based on two main objectives :

- To promote a new model of sustainable society through its education, research and innovation missions. In this manner, it is contributing to the transformation of a society that must limit its impact on resources, biodiversity and the environment.
- To reduce its own impact in an exemplary way, in particular by mobilising staff and students. The university has set itself a target of reducing its carbon footprint by 6% per year.



Ecological transition themes

• Mobilities •

Business trip and home-to-campus travel journeys of the 7,000 staff and 60,000 students alone account for almost half of the university's carbon footprint. Reducing their impact is a major challenge. The aim is to co-construct mobility plans tailored to each campus with the communities concerned, and to deploy the infrastructure and equipment needed to promote sustainable mobility.

• Energy •

The collective efforts of staff and students during the winter of 2022-2023 have reduced overall heating and electricity consumption by 11%. This has saved the university €2.4 million. The drive to reduce energy consumption is supported each year by an awareness-raising campaign, and a dedicated team supports the various components in their efforts to reduce their carbon footprint.

• Biodiversity •

Université de Lorraine is structuring a strategy to preserve, develop and restore biodiversity, which provides valuable ecosystem services. The aim is to move towards an ecocampus, starting with 2 pilot sites.

• Power supply •

The university is consolidating its move towards more vegetarian, local and organic food, all of which are key to preserving biodiversity and combatting global warming. This approach includes a purchasing policy that comprises stringent ecological criteria for caterers and service providers, the creation of shared vegetable gardens, support for the deployment of eco-responsible student initiatives (such as “Tim&Bastien” or “La Gamelle Étudiante”) and the installation of dispensers on campus that offer more responsible products with less packaging.

• Waste •

In 3 years, the university's household waste has fallen from 80% to 25% of the total waste collected, thanks to the massive deployment of sorting equipment. This dynamic is consolidated around 2 major themes : less waste (so less and better consumption) and better sort. It should be noted that the university produces as much waste as a town of 30,000 inhabitants like Épinal.



In order to support changes in habits towards greater energy sobriety, in 2022 Université de Lorraine is rolled out an awareness-raising campaign for staff and students.

This campaign is based on Aix-Marseille Université's ecogestures campaign, but the messages have been adapted to suit the environment of Université de Lorraine.



Equality, Diversity, Inclusion

The aim of the Equality – Diversity – Inclusion (EDI) mission at the Université de Lorraine is to fight discrimination based on primarily sex, gender identity, race or ethnic origin, religion or belief, disability or sexual orientation. Internally, this objective focuses on the preservation of community life. Externally, it aims to provide a solution, through research, to questions raised by these forms of inequality and to prepare, through training, future citizens and professionals who are open to the world and its diversity, and who know how to prevent discrimination.

Gender equality and sexist and sexual violence

Like other higher education establishments, Université de Lorraine has given gender equality a prominent place in its action plan. Its action is divided into two main areas :

The first part concerns actions to promote diversity with a view to gender equality. In that way, Université de Lorraine, through its EDI mission, is carrying out awareness-raising and communication sessions with students and the entire university community in order to :

- promote equal opportunities for girls and boys in the various courses of study, in their career choices and in their integration into the world of work ;
- provide greater equality in the recruitment and career development of all employees at all levels. In particular, to help women gain easier access to positions of responsibility within the university ;
- develop appropriate internal courses or for external partners.

The second part concerns the fight against gender-based and sexual violence. With this in mind, Université de Lorraine has set up :

- a system for reporting and dealing with situations of gender-based and sexual violence since 2018, subsequently extended to deal with situations of discrimination.

Campaigns of communication and awareness are organised on a regular basis to encourage people to speak out and report any cases of bullying or discrimination ;

- a system for reporting and dealing with bullying at the university.

Mission EDI also organizes training sessions on various EDI topics.



Sexual orientation and gender identity

The fight against LGBTphobia is a major focus of EDI at Université de Lorraine. Université de Lorraine's EDI policy is based on freedom. Freedom to choose his and her own gender and freedom to choose his and her own orientation.

• Gender identity •

Université de Lorraine is committed to making it easier for anyone to choose their first name on request. Through this policy, the institution is reaffirming its commitment to equality for the LGBT+ community.

• Sexual orientation •

The fight against LGBTphobia also takes the form of actions aimed at guaranteeing freedom of sexual orientation for the institution's students and establishment's employees. In practical terms, communication and awareness-raising sessions are organized within the university.

Disability

Disability is a major focus of the institution's EDI policy. Within the EDI mission, which is responsible for raising awareness within the university community about the inclusion of people with disabilities, a Disability mission is specifically dedicated to this issue.

Ethno-racial discrimination and secularism

As in society as a whole, the issue of ethno-racial discrimination is at the heart of the university's EDI policy. In addition to actions to fight racism and anti-Semitism, secularism has become a social issue in recent years. Mission EDI therefore works to guarantee the principle of secularism and promote ethno-racial diversity by organising events and awareness-raising programmes. Conference-debates are regularly organized with the participation of specialists in secularism, religions and ethno-racial discrimination. Through a multicultural approach, the Equality-Diversity-Inclusion mission aims to promote a culture of respect for others and to present the differences between people as an asset, as part of the process of living together.

Other discrimination

The cross-disciplinary dimension of the fight against discrimination and the multiplicity of criteria defined by the law are some of the reasons why Université de Lorraine's EDI mission opens the scope of its action to all types of discrimination, particularly those linked to physical appearance (for example, grossophobia).



BOOSTING OUR REGIONS

As the university of an entire region, the Université de Lorraine plays an active role in the economic and social development of the region and contributes fully to the growth of the economic landscape by participating actively in corporate research and development initiatives in which its researchers, teacher-researchers, support staff and laboratories contribute their recognised scientific skill and expertise. It mobilises a solid network of economic stakeholders around it and regularly organises business meetings where academics, professionals and economic driving forces from all over the region meet and exchange ideas, together with local authorities.

The Conférence universitaire territoriale

The *Conférence universitaire territoriale* brings together the local authorities where the university is located, namely the Grand Est region, the Sillon Lorrain metropolitan cluster, the two metropolitan areas of Metz and Nancy, the four departments as well as twelve agglomeration and commune communities.

The *Conférence universitaire territoriale* defined four main areas of work :

- **To know each other better** : organising regular visits and seminars, stepping up communication and exchanges opportunities.
- **Observe** : publish reference documents and carry out one or two annual surveys.
- **To develop multilateral projects** : in 2022, the “red thread” selected was access to scientific, technical and industrial culture for all, in all regions.
- **To develop bilateral actions on a regional scale** : develop the attractiveness of regions and contribute to their economic development, facilitate partners’ access to university resources, act together to welcome students (solidarity, attractiveness and quality of life), promote culture and the culture scientifique, technique and industrielle (CSTI).





Territorial University Deployment Schemes

The university's territorial strategy is set out and adapted for each territory in the form of a Territorial University Deployment Schemes, which makes it possible to set common objectives and share the resulting actions in terms of education, research, innovation and university life. Territorial University Deployment Plans are drawn up jointly by the university (components and central services) and local authorities, involving all relevant partners in a given area.

This approach aims to :

- Bring out a combination of innovative, flexible and agile solutions to deal with the diversity of situations that can no longer be met by a single approach ;
- Transforming the university's sites into advanced and open campuses, dismantling misperceptions about the university and reaching out to new audiences.

The aim of the Fondation ID+ Lorraine, a scientific cooperation foundation, is to develop scientific excellence in Lorraine. It replaced the former Fondation NIT of the Université de Lorraine by welcoming the Centre Hospitalier Régional Universitaire (CHRU) of Nancy as one of its institutional founding members. This new alliance will strengthen the links and scientific collaborations between these two major players in order to raise the profile of research, innovation and training in Lorraine and like this intensify his attractiveness.

The Foundation is made up of 17 founding members who have joined forces in the general interest of the region and society as a whole to promote success for all, develop the entrepreneurial spirit and cultivate excellence in research and innovation. The ambitions of the Fondation ID+ Lorraine are strong, as are those of the entire region, which is mobilising to take long-term action in the field of patronage by combining resources and joining forces.

AN INVESTING UNIVERSITY



The Datacenter Mutualisé Lorrain

The Université de Lorraine, as the contracting authority, in partnership with the CNRS, the Nancy CHRU and the Métropole du Grand Nancy, has undertaken to renovate the CNRS building into a shared datacenter. This datacenter, along with the Université de Strasbourg's, has been awarded joint accreditation by the Ministry of Higher Education and Research.

This new digital infrastructure hosting site guarantees the day-to-day operation of the establishments concerned and secure access to public digital services. In environmental terms, the heat produced by the datacenter could eventually be reused as a source of district heating for the Métropole du Grand Nancy.



The “France Relance” recovery plan



The French recovery plan, also known as the “France Relance” plan, includes a wide energy-efficient renovation program for State-owned buildings. Those investments will enable the support of the construction industry with the creation of various building sites at local levels. It will also decrease the environmental footprint of the public buildings thanks to a fast and significant action on energy consumption environmental.

Through various project calls, the recovery plan funds renovations and interventions in state-owned buildings and public institutions dedicated to higher education, research, and academic initiatives. It prioritizes projects requiring significant investments to improve energy performance. The planned construction includes major maintenance, renewal, major refurbishment of buildings with an energy-related challenge, removal of the oil-fired boilers, but also bringing up accessibility or security to standards. It can also be on-board operations, that is to say which are inextricably linked such as asbestos removal, the rooftop waterproofing or the restorations following the prioritized operations.

As part of the “France Relance” recovery plan, Université de Lorraine gathered a financial assistance of €22 million. This important amount of money will allow to finance the energy refurbishment of its buildings in a large part of the Lorraine territories.



The energy refurbishment of the university sports centre “Les Océanautes” has led to a 60% reduction in its energy consumption.

INCREASING THE INTERNATIONALIZATION

In a multicultural world where exchanges are increasing, where meetings are intensifying, studying in an international environment is a guarantee of a successful career in higher education.

Université de Lorraine welcomes 10,000 international students, including 800 PhD students, from every continent. Student mobility, double degree courses, Erasmus Mundus, double degree formations or student exchange agreements, international research collaborations: Université de Lorraine grows its international vocation by nature.

Université de Lorraine is recognised by the label “*Bienvenue en France*”, which ensures a high-quality welcome to the international public.

Université de Lorraine develops targeted strategic partnerships with international universities which are similar, with which it shares joint research activities, joint theses, and joint or partnership training.

Université de Lorraine is also a founding member of the University of the Greater Region (UniGR), a group of 6 universities from 3 border countries. Studying in Lorraine means living at the crossroads of Europe. Ideally located, our location allows a quick access to several major European capitals, including Paris.

Claiming our European dimension

Université de Lorraine has officially joined the European alliance “EURECA-PRO”, linked to the Sustainable Development Objective relating to responsible consumption and production. Université de Lorraine thus affirms its European DNA alongside 8 other universities from 7 different countries.

The alliance will continue its efforts to become the center of excellence in Europe for education and research on responsible consumption and production, as well as to achieve the long term goal of creating virtual and integrated European campus by 2040. Our participation will enable us to promote our shared values (openness, dialogue, inclusion, responsibility), strengthen our training in major transitions and consolidate educational mobility, boost research into responsible consumption and production, and raise the profile of the Grand Est region on the European higher education and research scene.



INNOVATING TO PROVIDE TRAINING FOR ALL

All higher education qualifications are available at Université de Lorraine. Whether in initial training or throughout each individual's professional career, the university helps everyone to achieve their plans.



+ Educating

At every level of training, in every field of training, all higher education diplomas are accessible at the university : BUT, bachelor's degree, master's degree, doctorate, engineering diplomas.

Tailor-made solutions for training employees, qualifying teams and upgrading skills.

+ Supporting

As agreed with society's expectations, Université de Lorraine offers its students the keys to building a personal project and initiating their professional integration by bringing the job market and the university close together.

Meetings, training and tools to help students find work.

+ Revealing

The doctorate is the highest university degree and provides training in research and innovation. It represents real professional research experience.

40% of doctoral students are from outside France, and 30% come from engineering schools.

+ Preparing students for their professional and personal lives

The university promotes the development of students through support systems for pedagogical innovation and educational engineering, interactions between disciplines, the complementarity of different learning methods, the recognition of student involvement in professional, social, artistic, and sport activities, and the expansion of international study programs.



The 2023 back-to-school campaign at UL features Zoé, student in pharmacy, and Jules, student's vice-president of Université de Lorraine.

SUPPORTING OUR STUDENT ENTREPRENEURS

Since 2011, students can develop entrepreneurship culture thanks to the Pôle entrepreneuriat étudiant de Lorraine (Peel) which supports them in their projects. Training courses, entrepreneurial awareness initiatives, meetings and round tables are offered to them.



university

in terms of entrepreneurship



The Pôle entrepreneuriat étudiant de Lorraine (Peel) aims to develop entrepreneurial culture at Université de Lorraine. This involves raising awareness, training and providing support. Since its creation, million student-entrepreneurs have been supported, and Université de Lorraine is regularly ranked as the most entrepreneurial university in France.

The Peel is fixed in its region by being an integral part of the regional entrepreneurship and innovation ecosystem. It is active in all the schools and faculties of the university and is part of an extensive network of the partners and funders. The Peel implements a teaching approach based on the most innovative research work and the tools provided by the Ministère de l'Enseignement supérieur et de la Recherche.



Peel is part of the national network of Pôles Etudiants Pour l'Innovation, le Transfert et l'Entrepreneuriat (PEPITE). These centres bring together higher education establishments, economic players and business creation professionals to train and support students in entrepreneurship and innovation.

SUPPORT THE MAJOR SOCIETAL CHALLENGES



Dealing with major societal challenges

As a research-intensive university covering all scientific fields, Université de Lorraine is committed to creating new knowledge and transferring new knowledge and technological innovations to civil society, the economy and the cultural world.

Research activities are carried out by 4,000 teaching and research staff within 60 structured and recognised research units, operating through a strong partnership with the major research organisations in Lorraine.

Université de Lorraine is truly committed to training for and through research, providing scientific supervision for more than 1,900 doctoral students, the future researchers and senior managers of tomorrow.

With the Initiative Science Innovation Territoire Economie (I-SITE) confirmed in 2021, research is being structured in close collaboration with the partners of the Lorraine research site.

All potential are invested in terms of training and research, in order to develop a scientific, technological and professional expertise around six major societal challenges : materials, health, ecological transition, energy transition, digital transformation and societal transitions.



Open science

Over the past 10 years, Université de Lorraine has become increasingly committed to open science. Today, it is reflected in a strong policy led by its steering committee, as well as human and financial resources. In line with the national plan for open science, its support is structured around three axes, led by three operational committees.



Opening up publications

Université de Lorraine made HAL its official bibliography and relies on the Digital Republic Law to request the deposit of the full text of all articles. Additionally, it provides financial support to numerous initiatives promoting open access without payment by either readers or authors. The Éditions de l'Université de Lorraine (ÉDUL) have also committed to open access for its research publications.



HAL
science ouverte

Opening up research data

Université de Lorraine has a service to support researchers manage the data they produce and use, ADOC Lorraine, which has been awarded the national label “*Atelier de la donnée*”. The workshop is the single unique point of entry for all data-related issues : data management plan, data deposit in repositories, data paper publication, electronic lab notebooks, etc.

This university's data repository, DOREL, allows researchers to deposit their data in *Recherche Data Gouv*, an institutional, sovereign and permanent tool.

The Éditions de l'Université de Lorraine (ÉDUL)

ÉDUL are a rigorous public scientific publishing house firmly committed to open science. In this regard, ÉDUL publishes high-quality work, both in print and digital formats, from French and international researchers, focusing on themes and disciplines in which the expertise of Université de Lorraine is recognized.

In line with Université de Lorraine's commitment to open science, one of ÉDUL's distinguishing features is the provision of all scientific works in open access in digital format, simultaneously with their release in print version.

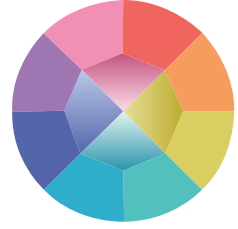


Opening up codes and softwares

Since 2023, Université de Lorraine has an operational committee dedicated to open software and algorithms to support all scientific staff in this endeavor.

Furthermore, the institution is a pioneer in monitoring Open Science, being the first higher education institution to implement an Open Science Barometer and actively participating in the national Barometer. University of Lorraine is also involved in national and international Open Science networks.

REVEAL THE FACETS OF THE PHD



Pursuing a PhD after completing a master's degree or an engineering school is a decision to embark on a rewarding and stimulating experience that leads to the highest university degree, recognized worldwide. Within a doctoral school and a research laboratory, PhD candidates are supported in acquiring research skills. At Université de Lorraine, there are 8 doctoral schools covering all areas of research.

+ The Maison du Doctorat : a single gateway to numerous services

Located in Metz and Nancy, the Maison du doctorat is a welcoming space for PhD students, facilitating access to university services. PhD candidates receive personalized support for their administrative and academic needs, and international PhD students benefit from enhanced assistance with their procedures. The shared service offering between the doctoral schools includes training and support for international mobility.

+ Encourage international mobility

DrEAM is the scheme set up by Université de Lorraine as part of the Lorraine Initiative of Excellence to finance the international mobility of its doctoral students. It is open to all those enrolled at Université de Lorraine who would like to spend 2 to 6 months in a research unit abroad.



LIVING WELL AT UNIVERSITÉ DE LORRAINE

While the university serves as a place for teaching, exams, and research for students and staff, it is also an essential living environment. Through its services, facilities, and a dedicated network of associations, the university provides its student community with a supportive living environment conducive to individual success. Whether through health promotion, social support, or offering cultural and sports activities, Université de Lorraine is committed to the well-being of its students on its campuses.

+ University, a place of culture

Student associations, cultural facilities, including the Espace Bernard-Marie Koltès theatre for contemporary drama on the Saulcy campus in Metz, as well as sports activities, libraries, etc. Recognised for its cultural policy and sense of social responsibility at local, regional and national level, Université de Lorraine offers a rich and dynamic experience and living environment to its entire community on all its campuses in Lorraine by developing an ambitious cultural policy through a wide range of initiatives throughout the region.



Sports for everyone

Sports are everywhere at Université de Lorraine with a large offer for students and staff. The SUAPS provides more than 70 activities across the entire region. Sports activities are also managed directly by the student community on a campus or within a school through sports office. The university community is also involved in high-level sports, with students and staff having the opportunity to participate in university, academic, inter-ademic, national, and international competitions by joining the *Association Sportive de l'Université de Lorraine* (ASUL).

Health & social

The Student Health Service implements health prevention and promotion activities on campus throughout the academic year. Students can get involved in these initiatives by becoming health ambassadors. This involvement can also be recognized through the *Bonus Engagement Étudiant* (B2E). Several support mechanisms are available through the social service of the Student Health Service, and social workers provide assistance to students in difficulty, helping them find solutions best suited to their needs and contributing to their well-being.



Student Initiatives

Université de Lorraine supports projects aimed at enhancing student life by backing the institution's associative network. This support for initiative takes the form of assistance for students, from setting up a project to finding funding, from raising awareness of regulatory obligations and safety requirements to making contact with partners.

**Responsability
Creativity
Reflexivity
Solidarity
Universality**



univ-lorraine.fr